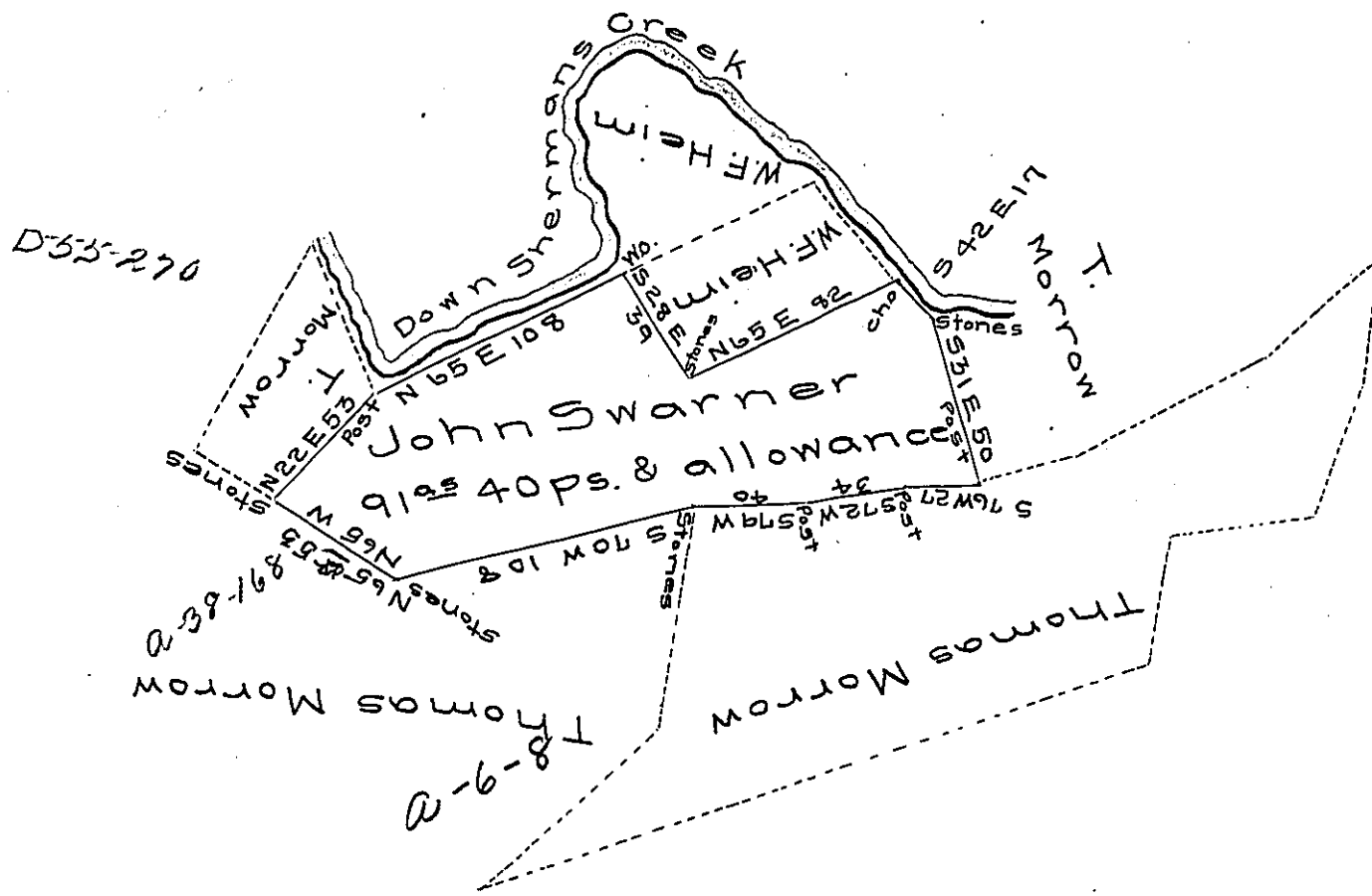


D-21-161



Draft of a tract of land in Tyrone township Perry County Penna containing 91^{as} 40 perches and allowance, being part of a larger tract of 215 acres 64 perches surveyed on a warrant to Peter Riggle - mandated February 3, 1814. The above part surveyed for John Swarner for patenting April 7, 1877.

per James Bell C.S.

To Hon. W^m McCandless }
 Sec. Int. Affairs }

IN TESTIMONY that the above is a copy of the original remaining on file in the Department of Internal Affairs of Pennsylvania, made conformably to an Act of Assembly approved the 16th day of February, 1833, I have hereunto set my Hand and caused the Seal of said Department to be affixed at Harrisburg, this twenty fourth day of October 1906.

James R. Brown
 Secretary of Internal Affairs.